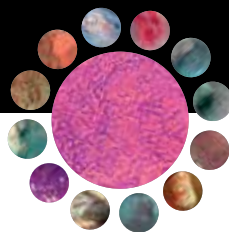


19<sup>TH</sup> DÜSSELDORF INTERNATIONAL  
ENDOSCOPY SYMPOSIUM  
FEBRUARY 2—4, 2017

MARITIM HOTEL DÜSSELDORF, AIRPORT CITY, GERMANY

P R O G R A M





**PROGRAM**

February 2 – 4, 2017  
Maritim Hotel Düsseldorf, Airport City, Germany

[www.endo-duesseldorf.com](http://www.endo-duesseldorf.com)



The symposium is endorsed by



**WEO**  
World Endoscopy  
Organization

World Endoscopy Organization



European Society of Gastrointestinal Endoscopy



German Society for Gastrointestinal,  
Digestive and Metabolic Diseases

**Scientific Director**

Horst Neuhaus

Evangelisches Krankenhaus Düsseldorf, Germany

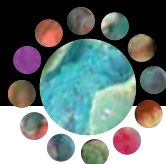
## TABLE OF CONTENT

Foreword	Page 03
Scientific Program on Friday, February 3, 2017	Page 05
Scientific Program on Saturday, February 4, 2017	Page 08
Faculty	Page 10
Satellite symposium on Thursday, February 2, 2017	Page 12
Satellite symposium on Friday, February 3, 2017	Page 13
Registration	Page 14
General information	Page 16
Sponsors	Page 20
Exhibitors	Page 22
Arrival	Page 24
Announcement 2018	Page 26
Imprint	Page 26
Registration form	Page 27



**DOWNLOAD THE PROGRAM AS PDF  
ON YOUR SMARTPHONE OR IPAD!**

For use you need a QR-Code reader  
(available e.g. at the App-Store) and  
an Acrobat Reader.



I am delighted to welcome you to the 19<sup>th</sup> Düsseldorf International Endoscopy Symposium. Since our first meeting it has been our goal to highlight latest developments in endoscopic imaging and minimally invasive approaches to gastrointestinal and biliopancreatic diseases. With our varied program of lectures, discussions and live video presentations by experts from different schools we believe we have created an ideal professional learning environment. The rise in the number of participants and the very positive results of a detailed evaluation of the previous symposia prove that we have been successful in doing so. The faculty, our team, the congress organization, LUX AV and I will be pleased to welcome you. We hope you have an interesting and enjoyable stay in Düsseldorf.

*Horst Neuhaus*

### **Learning objectives of the symposium**

- Evaluate recent advances in endoscopy; assess their clinical utility and level of evidence
- Apply new endoscopic techniques, instruments and accessories in GI and biliopancreatic diseases compare them with traditional methods and devices
- Choose the optimal endoscopic approach for specific case management
- Manage failed interventions and adverse events
- Recognize the importance of an interdisciplinary approach
- Emphasize the importance of quality in endoscopy

### **International, multimedia and interactive format**

- Live cases transmitted in high definition by a superb professional audiovisual team (LUX AV) from the Evangelisches Krankenhaus Düsseldorf
- Presentations and demonstrations by world renowned thought-leaders and experts
- Mini-symposia, state of the art lecture
- 2 satellite symposia
- 7 breakout sessions
- Symposium for nurses
- Continuous simultaneous translations (German, English, Russian)
- Interactive discussions / Q & A by microphone, SMS, WhatsApp, Twitter or e-mail
- Exhibition of a wide range of conventional and novel biomedical products

## FOREWORD

### Intended audience

- Gastroenterologists, oncologists, internists
- Surgeons, interventional radiologists
- Nurses
- Trainees, students

### Symposium location: Maritim Hotel Düsseldorf

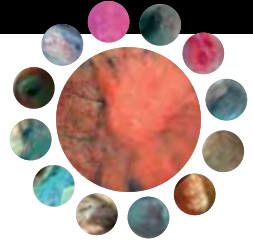
- Situated at the Düsseldorf International Airport and easily accessible by all forms of transport
- Modern conference hall with high quality audiovisual transmission and a spacious area for the exhibition
- Convivial atmosphere for breaks and informal interchanges
- Short distance to the city center for combining work with pleasure (e.g. cultural venues, famous shopping, diversity of restaurants)
- Convenient accommodation at special rates

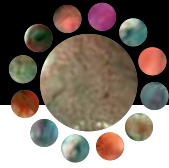
### COCS GmbH - Congress Organization C. Schäfer

- A professional and experienced organization which has successfully managed our previous symposia as well as many other national and international congresses
- Online registration, national certification, CME accreditation will be arranged
- Reasonable registration fee includes all symposium activities, satellite symposia, breakout sessions, lunches, refreshments and free access to the local public transportation system

### [www.endo-duesseldorf.com](http://www.endo-duesseldorf.com)

- Program download (English, German, Russian)
- Online registration
- Updated information
- Selected lectures and live video cases





**PROGRAM – FRIDAY, FEBRUARY 3, 2017**

**08.30 INTRODUCTION**

**08.40 LIVE DEMONSTRATIONS I**

Chair: *J. Devière, Brussels; M. Engelke, Herne; G. Haber, New York; A. Meining, Ulm; H. Neuhaus, Düsseldorf; H. Yamamoto, Tochigi*

10.15 Coffee break, visit to the industry exhibition

**10.45 1<sup>ST</sup> MINI-SYMPOSIUM**

**Endoscopy in IBD: controversial issues**

Chair: *F. Hagenmüller, Hamburg; P. N. Meier, Hanover*

10.45 Why and how should we endoscopically determine the disease activity?  
*R. Bisschops, Leuven*

11.00 How can we improve surveillance for early detection of neoplasia?  
*O. Pech, Regensburg*

11.15 Which early neoplastic lesions should be endoscopically treated?  
*B. Schumacher, Essen*

11.30 Questions and answers

**11.45 LIVE DEMONSTRATIONS II**

Chair: *G. Costamagna, Rome; I. Mostafa, Cairo; O. Pech, Regensburg; H.-J. Schulz, Berlin; K. Wietfeld, Marl; P. Zhou, Shanghai*

13.00 Lunch, visit to the industry exhibition

**14.00 LIVE DEMONSTRATIONS III**

Chair: *J. G. Albert, Stuttgart; J. Bergman, Amsterdam; M. Giovannini, Marseille; H. Inoue, Tokyo; G. Rettig, Berlin; T. Rösch, Hamburg*

15.45 Coffee break, visit to the industry exhibition

## PROGRAM – FRIDAY, FEBRUARY 3, 2017

### 16.15 2<sup>ND</sup> MINI-SYMPOSIUM

#### **Interdisciplinary management of cystic pancreatic lesions**

Chair: *G. Costamagna, Rome; T. Rösch, Hamburg*

16.15 Diagnostic approach, relevance of EUS-FNA/FNB  
*M. Giovannini, Marseille*

16.30 Individualized treatment

Watchful waiting, EUS guided therapy  
*T. Itoi, Tokyo*

Open and laparoscopic surgical options  
*W. Hartwig, Munich*

17.00 A challenging case  
*J. Devière, Brussels*

17.15 Questions and answers

### 16.15 SYMPOSIUM FOR NURSES

Registration required; **Language: German, no simultaneous translation**

The symposium takes place in room Mauritius on the first floor.

Chair: *U. Pfeifer, Düsseldorf; H.-J. Schulz, Berlin*

16.15 Modern treatment of pancreatic fluid collections  
*A. Meining, Ulm*

16.35 Diagnosis and treatment of Barrett's esophagus in a team approach  
*O. Pech, Regensburg; U. Pfeifer, Düsseldorf*

17.00 Challenging cases of complications: what would you have done?  
*P. N. Meier, Hanover*

17.20 Risk management and troubleshooting in endoscopy  
*M. Engelke, Herne*

17.40 Patient information and informed consent: how to apply the law in clinical practice?  
*J. G. Albert, Stuttgart*

18.00 End of the symposium



17.30

**SNACK WITH THE EXPERTS**

Breakout sessions for questions and answers

Registration required; Language: English, no simultaneous translation

A) Update on POEM and endoscopic antireflux therapy

*T. Beyna; G. Costamagna, H. Inoue*

B) Barrett's esophagus: pitfalls in endoscopic management

*J. Bergman; P. N. Meier, O. Pech*

C) Resection of gastroduodenal mucosal and subepithelial lesions

*A. Meining; T. Rösch, P. Zhou*

D) Rational treatment of upper GI bleeding

*R. Bisschops; F. Hagenmüller, I. Mostafa*

E) Approach to complex bile duct stones

*J. Devière; H. Neuhaus, H.-J. Schulz*

F) Management of pancreatic fluid collections

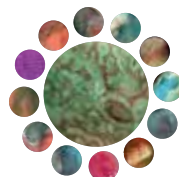
*J. G. Albert; M. Giovannini, W. Hartwig, T. Itoi*

G) Recurrent colorectal polyps: EMR, ESD, FTRD, avulsion or laparoscopic resection?

*G. Haber; B. Schumacher, H. Yamamoto*

18.30

End of the first day of the symposium





**08.30 3<sup>RD</sup> MINI-SYMPOSIUM**

**Serrated colorectal lesions**

Chair: *H. Yamamoto, Tohigi; H. Neuhaus, Düsseldorf*

08.30 Definition, epidemiology and prognosis  
*A. Tannapfel, Bochum*

08.45 Endoscopic detection and characterization  
*R. Bisschops, Leuven*

09.00 Evidence based and personalized endoscopic treatment

Small/multiple serrated lesions  
*T. Rösch, Hamburg*

Advanced serrated lesions and adenomas  
*G. Haber, New York*

09.30 Questions and answers

10.00 Coffee break, visit to the industry exhibition

**10.30 LIVE DEMONSTRATIONS IV**

Chair: *R. Bisschops, Leuven; F. Hagenmüller, Hamburg; T. Itoi, Tokyo; P. N. Meier, Hanover; B. Schumacher, Essen; H. R. Tillgaard, Aabenraa*

**12.35 STATE OF THE ART LECTURE**

Chair: *G. Haber, New York*

**Endolumenal treatment of esophageal and gastric motility disorders**

*H. Inoue, Tokyo*

12.55 Lunch, visit to the industry exhibition

**13.35 Update on clinical and histological results of the live procedures**

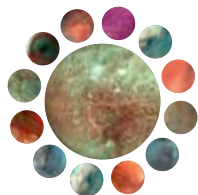
*J. Kandler, Düsseldorf; P. Reinecke, Düsseldorf*

13.50 4<sup>TH</sup> MINI-SYMPOSIUM

**New technologies**

Chair: *J. Devière, Brussels; A. Meining, Ulm; H.-J. Schulz, Berlin*

- 13.50 Hemospray for bleeding esophageal varices  
*I. Mostafa, Cairo*
- 14.06 New ablation techniques for Barrett`s epithelium  
*J. Bergman, Amsterdam*
- 14.22 Update on submucosal tunneling endoscopic resection  
*P. Zhou, Shanghai*
- 14.38 Pocket creation method for ESD  
*H. Yamamoto, Tochigi*
- 14.54 Endoscopic procedures for metabolic regeneration  
*G. Costamagna, Rome*
- 15.10 EUS guided ablation in patients with pancreatic adenocarcinoma  
*M. Giovannini, Marseille*
- 15.26 Motorized endoscopy  
*T. Beyna, Düsseldorf*
- 15.45 End of the symposium



INTERNATIONAL



**Bergman, Jacques, MD, Prof.**  
Department of Gastroenterology & Hepatology, Academic Medical Center/University of Amsterdam Amsterdam, The Netherlands



**Bisschops, Raf, MD, Prof.**  
Department of Gastroenterology and Hepatology, University Hospitals Leuven Leuven, Belgium



**Costamagna, Guido, MD, Prof.**  
Istituto di Clinica Chirurgica, Università Cattolica del S. Cuore Rome, Italy



**Devrière, Jacques, MD, Prof.**  
Department of Gastroenterology and Hepato-Pancreatology, Université Libre des Bruxelles Brussels, Belgium



**Giovannini, Marc, MD, Prof.**  
Oncologie Médicale, L'Institut Paoli-Calmettes Marseille, France



**Haber, Greg, MD, Prof.**  
Department of Gastroenterology, New York University Langone Medical Center New York, USA



**Inoue, Haruhiro, MD, Prof.**  
Digestive Diseases Center, Showa University Koto-Toyosu Hospital Tokyo, Japan



**Itoi, Takao, MD, Prof.**  
Department of Gastroenterology and Hepatology, Tokyo Medical University Tokyo, Japan



**Mostafa, Ibrahim, MD, Prof.**  
Department of Gastroenterology and Hepatology, Theodor Bilharz Research Institute Cairo, Egypt



**Tillgaard, Helle Roy**  
Hospital of Southern Jutland Aabenraa, Denmark



**Yamamoto, Hironori, MD, Prof.**  
Department of Medicine, Division of Gastroenterology, Jichi Medical University Tochigi, Japan



**Zhou, Pinghong, MD, Prof.**  
Endoscopy Center Zhongshan Hospital, Fudan University Shanghai, China

NATIONAL



**Albert, Jörg G., Prof. Dr.**  
Abteilung für Gastroenterologie, Hepatologie und Endokrinologie, Robert-Bosch-Krankenhaus Stuttgart



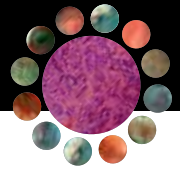
**Engelke, Monika**  
Bildungszentrum Ruhr Herne



**Hagenmüller, Friedrich, Prof. Dr.**  
Innere Medizin I, Asklepios Klinik Altona Hamburg



**Hartwig, Werner, Prof. Dr.**  
Klinik für Allgemein-, Viszeral-, Gefäß- und Transplantationschirurgie, LMU Klinikum der Universität München Munich



**Meier, Peter N., Dr.**  
Med. Klinik II,  
DIAKOVERE Henriettenstift  
Hanover



**Meining, Alexander, Prof. Dr.**  
Klinik für Innere Medizin I,  
Universitätsklinik Ulm  
Ulm



**Pech, Oliver, Prof. Dr.**  
Gastroenterologie, Krankenhaus  
Barmherzige Brüder  
Regensburg



**Rettig, Gudrun**  
Klinik für Innere Medizin, Sana  
Klinikum Lichtenberg  
Berlin



**Rösch, Thomas, Prof. Dr.**  
Klinik für Interdisziplinäre  
Endoskopie, Universitätsklinikum  
Hamburg-Eppendorf  
Hamburg



**Schulz, Hans-Joachim, Prof. Dr.**  
Klinik für Innere Medizin, Sana  
Klinikum Berlin-Lichtenberg  
Berlin



**Schumacher, Brigitte, PD Dr.**  
Klinik für Innere Medizin und  
Gastroenterologie, Elisabeth-  
Krankenhaus Essen, Essen



**Tannapfel, Andrea, Prof. Dr.**  
Institut für Pathologie, Ruhr-  
Universität Bochum  
Bochum



**Wietfeld, Kornelia**  
Abteilung für Endoskopie,  
Paracelsus-Klinik Marl  
Marl

LOCAL



**Reinecke, Petra, Prof. Dr.**  
Institut für Pathologie,  
Universitätsklinikum Düsseldorf  
Düsseldorf



**Balasus, Nicole, Dr.**  
Medizinische Klinik, Evangelisches  
Krankenhaus Düsseldorf  
Düsseldorf



**Bender, Philipp, Dr.**  
Medizinische Klinik, Evangelisches  
Krankenhaus Düsseldorf  
Düsseldorf



**Beyna, Torsten, Dr.**  
Medizinische Klinik, Evangelisches  
Krankenhaus Düsseldorf  
Düsseldorf



**Gerges, Christian, Dr.**  
Medizinische Klinik, Evangelisches  
Krankenhaus Düsseldorf  
Düsseldorf



**Kandler, Jennis, Dr.**  
Medizinische Klinik, Evangelisches  
Krankenhaus Düsseldorf  
Düsseldorf



**Neuhaus, Horst, Prof. Dr.**  
Medizinische Klinik, Evangelisches  
Krankenhaus Düsseldorf  
Düsseldorf



**Pfeifer, Ute, Dr.**  
Medizinische Klinik, Evangelisches  
Krankenhaus Düsseldorf  
Düsseldorf



**Ragheb, André, Dr.**  
Medizinische Klinik, Evangelisches  
Krankenhaus Düsseldorf  
Düsseldorf

16.00 OLYMPUS SATELLITE SYMPOSIUM

**Biliary endoscopy 2017**

Chair: *P. N. Meier, Hanover; H. Neuhaus, Düsseldorf*

- 16.00 Introduction
- 16.05 How to improve cannulation and sphincterotomy?  
*J. Devière, Brussels*
- 16.20 Why should we consider using short wire technologies for ERCP?  
*J. G. Albert, Stuttgart*
- 16.35 Role of cholangioscopy in evaluation of indeterminate strictures  
*T. Itoi, Tokyo*
- 16.50 ERCP guided implantation of SEMS: update on indications and techniques  
*G. Costamagna, Rome*
- 17.05 EUS guided biliary drainage: when and how?  
*A. Meining, Ulm*
- 17.20 Optimizing removal of bile duct stones  
*G. Haber, New York*
- 17.35 Round table discussion:  
Quality assurance in biliary endoscopy: a global perspective
- 18.00 End of the satellite symposium



Registration required

No credits provided

Language: English and German with simultaneous translation

The symposium takes place in room Mauritius on the first floor

**07.00 MEDTRONIC SATELLITE SYMPOSIUM**

**Hot topics in GI endoscopy**

Chair: *R. Bisschops, Leuven; B. Schumacher, Essen*

07.00 Introduction

07.05 Barrett's: should LGD be treated?  
*J. Bergman, Amsterdam*

07.25 Diagnosis and staging of upper GIT tumors:  
when do we need EUS ± FNA/FNB?  
*T. Rösch, Hamburg*

07.45 Obscure GI bleeding: first capsule endoscopy or enteroscopy?  
Pro capsule: *F. Hagenmüller, Hamburg*  
Pro enteroscopy: *H. Yamamoto, Tochigi*

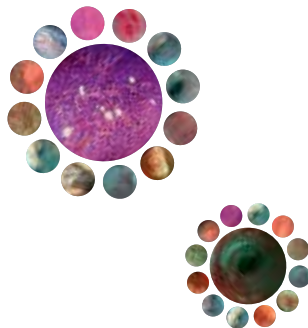
08.15 End of the satellite symposium

Registration required

No credits provided

Language: English, no simultaneous translation

The symposium takes place in room Mauritius on the first floor





## Registration Fee

The registration fee includes admission to all scientific presentations, coffee breaks and lunch on Friday and Saturday and a ticket for public transport on February 3 and 4, 2017.

<b>Registration and payment</b>	<b>until Dec 15, 2016</b>	<b>after Dec 16, 2016</b>
Physician	EUR 130,-	EUR 170,-
Member of ESGE/bng	EUR 110,-	EUR 150,-
Endoscopy assistance	EUR 40,-	EUR 60,-
Student (with certification)	EUR 20,-	EUR 30,-
One day ticket (only on-site)		EUR 100,-

The participation in the satellite symposia is free of charge.

## Registration

Registration is preferred on our website **www.endo-duesseldorf.com**. You can also use enclosed registration form on page 27 (please return to mentioned address). Registration deadline is **January 16, 2017**. Please register on-site after this date. You will receive a confirmation **after** payment.

A separate registration is needed for the following sessions: **Satellite symposium** on Thursday, February 2, 2017 (with translation), **Satellite symposium** on Friday, February 3, 2017 (Language: English), **Snack with the experts** on Friday, February 3, 2017 (Language: English), **Symposium for nurses** on Friday, February 3, 2017 (Language: German)

## Payment

Please indicate on your bank transfer „**Endo2017**“ and the **name of the participant**. After January 16, 2017 payments can only be accepted on-site.

Bank transfer to:  
COCS GmbH, Munich  
HypoVereinsbank Munich  
IBAN: DE69 7002 0270 0039 6176 76  
BIC: HYVEDE MMXXX

**Please note that we do not cover any bank charges.**

## Cancellation

In case of cancellation until January 16, 2017 we will reimburse your payment but an administration service fee of EUR 20,- will be charged. No refunds will be made in the event of any cancellations received after January 16, 2017.



## GENERAL INFORMATION



### Scientific Director

Horst Neuhaus  
Evangelisches Krankenhaus Düsseldorf  
Kirchfeldstr. 40  
40217 Düsseldorf, Germany  
Phone: +49 (0)211 / 919 16 05, Fax: +49 (0)211 / 919 39 60  
E-mail: [sabine.kindler@evk-duesseldorf.de](mailto:sabine.kindler@evk-duesseldorf.de)  
[www.evk-duesseldorf.de](http://www.evk-duesseldorf.de)

### Congress Organizer



COCS GmbH – Congress Organisation C. Schäfer  
Rosenheimer Str. 145c  
81671 Munich, Germany  
Phone: +49 (0)89 / 89 06 77 - 0, Fax: +49 (0)89 / 89 06 77 - 77  
E-mail: [sandra.reber@cocs.de](mailto:sandra.reber@cocs.de)  
[www.cocs.de](http://www.cocs.de)



### Congress Coordination

Nicole Balasus  
Philipp Bender  
Torsten Beyna  
Christian Gerges  
Jennis Kandler  
André Ragheb

### Congress Location

Maritim Hotel Düsseldorf  
Maritim-Platz 1  
40474 Düsseldorf, Germany  
[www.maritim.de](http://www.maritim.de)

### Homepage

[www.endo-duesseldorf.com](http://www.endo-duesseldorf.com)

### Opening Hours

Thursday, February 2, 2017 14.00 – 18.00

### Registration Desk

Friday, February 3, 2017 6.30 – 18.30

Saturday, February 4, 2017 8.00 – 16.00

### Exhibition

An exhibition of biomedical and pharmaceutical products will be presented during the symposium. A list of exhibitors can be found on page 22/23.

### Opening Hours of the Exhibition

Friday, February 3, 2017 8.00 – 18.00

Saturday, February 4, 2017 8.00 – 15.30

## GENERAL INFORMATION

### **Photography / filming**

No photography or filming during lectures or live demonstrations permitted. The organizers will share selected recordings, lectures and edited live demonstrations on the website ([www.endo-duesseldorf.com](http://www.endo-duesseldorf.com)).

Please advise in advance should you not wish to be recorded.

### **Interactive discussion**

Questions or comments during the sessions can be send via microphone, SMS, WhatsApp, Twitter or e-mail: [endo@luxav.org](mailto:endo@luxav.org)



- Hotel Reservation** We have arranged a special rate at the Maritim Hotel Düsseldorf for our participants, valid for reservation made for your stay from February 2 to 4, 2017. Please book online under [www.endo-duesseldorf.com](http://www.endo-duesseldorf.com) using **the reference Endo 2017** as soon as possible but not later than **December 16, 2016**.
- Certification** All participants will receive a confirmation of participation at the end of the symposium. The symposium will be certified by the Ärztekammer Nordrhein. An international certification as well as an endoscopy assistance certification will be arranged.
- Free Public Transport** Use of public transport VRR (Verkehrsverbund Rhein-Ruhr) on both days of the core meeting (February 3-4) will be permitted free of charge upon presentation of your name tag. This includes the regional train within the VRR, all buses, trams and metros (U- and S-Bahn).
- Congress Language** The congress language is German and English with simultaneous translation during the entire meeting. Furthermore, there will be simultaneous translation into Russian. The symposium for nurses will be held in German only, the symposium on Friday morning and the snack with the experts will be held in English only.
- Congress Program** You will find a German, English and Russian version of the program on the website **[www.endo-duesseldorf.com](http://www.endo-duesseldorf.com)**.
- Congress Documents** Congress documents will be distributed on-site at the registration desk in the Maritim Hotel. Participants from Germany, Austria and Switzerland will receive their congress documents by mail if payments are received by January 16, 2017.
- Name Tags** For all participants it is mandatory to wear the name tag visible.
- Liability** The congress organizer will bear no liability for loss, accident, damage or injury to persons or property irrespective of the cause. The client participates at all sessions, tours and events at his/her own risk. Sole place of jurisdiction is Munich, Germany. German law is applicable.



## SPONSORS

We would like to thank the following companies for their professional and financial support of the symposium (valid at time of printing - without engagement):

### Principal Sponsors



Olympus Deutschland GmbH, Hamburg  
[www.olympus.de](http://www.olympus.de)



Boston Scientific GmbH, Ratingen  
[www.bostonscientific.com](http://www.bostonscientific.com)



Cook Medical, Limerick, Ireland  
[www.cookmedical.com](http://www.cookmedical.com)



ERBE Elektromedizin GmbH, Tübingen  
[www.erbe-med.com](http://www.erbe-med.com)



Dr. Falk Pharma GmbH, Freiburg  
[www.dralkpharma.de](http://www.dralkpharma.de)



Medtronic, Zurich, Switzerland  
[www.medtronic.com](http://www.medtronic.com)

## SPONSORS



### Major Sponsors



Cantel Medical / Medivators,  
PC Heerlen, The Netherlands  
[www.medivators.eu](http://www.medivators.eu)



Ferring Arzneimittel GmbH, Kiel  
[www.ferring.de](http://www.ferring.de)



Fractyl Laboratories Inc., Lexington, USA  
[www.fractyl.com](http://www.fractyl.com)



FUJIFILM Europe GmbH, Düsseldorf  
[www.fujifilm.eu](http://www.fujifilm.eu)



MTW-Endoskopie W. Haag KG, Wesel  
[www.mtw-endoskopie.de](http://www.mtw-endoskopie.de)



Norgine GmbH, Marburg  
[www.norgine.de](http://www.norgine.de)



PENTAX Europe GmbH, Hamburg  
[www.pentaxmedical.com](http://www.pentaxmedical.com)



Takeda Pharma Vertrieb GmbH & Co. KG, Berlin  
[www.takeda.de](http://www.takeda.de)



US Endoscopy, Mentor, Ohio, USA  
[www.usendoscopy.com](http://www.usendoscopy.com)

### Regular Sponsors



EndoChoice GmbH, Halstenbek  
[www.endochoice.de](http://www.endochoice.de)



mandel + rupp GmbH, Erkrath  
[www.mandel-rupp.de](http://www.mandel-rupp.de)



Medwork GmbH, Höchststadt  
[www.medwork.com](http://www.medwork.com)



MICRO-TECH Europe GmbH, Düsseldorf  
[www.micro-tech-europe.com](http://www.micro-tech-europe.com)



Ovesco Endoscopy AG, Tübingen  
[www.ovesco.com](http://www.ovesco.com)



Taewoong Medical, Goyang-si, Korea  
[www.taewoongmedical.com](http://www.taewoongmedical.com)

## EXHIBITORS

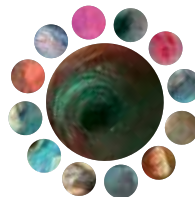
AP Nenno Medizintechnik GmbH, Marl	<a href="http://www.ap-nenno.de">www.ap-nenno.de</a>
Belimed GmbH, Mühlendorf am Inn	<a href="http://www.belimed.com">www.belimed.com</a>
BHT Hygienetechnik GmbH, Gersthofen	<a href="http://www.bht.de">www.bht.de</a>
Boston Scientific GmbH, Ratingen	<a href="http://www.bostonscientific.com">www.bostonscientific.com</a>
Bracco Imaging Deutschland GmbH, Konstanz	<a href="http://www.braccoimaging.de">www.braccoimaging.de</a>
Cantel Medical / Medivators, PC Heerlen, The Netherlands	<a href="http://www.medivators.eu">www.medivators.eu</a>
Cook Medical, Limerick, Ireland	<a href="http://www.cookmedical.com">www.cookmedical.com</a>
DEGEA - Deutsche Gesellschaft für Endoskopiefachberufe e.V., Herne	<a href="http://www.degea.de">www.degea.de</a>
DGE-BV - Deutsche Gesellschaft für Endoskopie und Bildgebende Verfahren e.V., Munich	<a href="http://www.dge-bv.de">www.dge-bv.de</a>
E & L medical systems GmbH, Erlangen	<a href="http://www.eundl.de">www.eundl.de</a>
Endo-Flex GmbH, Voerde	<a href="http://www.endo-flex.de">www.endo-flex.de</a>
Endo-Technik GmbH, Solingen	<a href="http://www.endo-technik.de">www.endo-technik.de</a>
EndoChoice GmbH, Halstenbek	<a href="http://www.endochoice.de">www.endochoice.de</a>
Endomed Endoskopie + Hygiene GmbH, Pfungstadt	<a href="http://www.endomed.de">www.endomed.de</a>
ERBE Elektromedizin GmbH, Tübingen	<a href="http://www.erbe-med.com">www.erbe-med.com</a>
ESGE – European Society of Gastrointestinal Endoscopy, Munich	<a href="http://www.esge.com">www.esge.com</a>
Dr. Falk Pharma GmbH, Freiburg	<a href="http://www.dr.falkpharma.de">www.dr.falkpharma.de</a>
Ferring Arzneimittel GmbH, Kiel	<a href="http://www.ferring.de">www.ferring.de</a>
Fractyl Laboratories Inc., Lexington, USA	<a href="http://www.fractyl.com">www.fractyl.com</a>
Fresenius Kabi Deutschland GmbH, Bad Homburg	<a href="http://www.fresenius-kabi.de">www.fresenius-kabi.de</a>
FUJIFILM Europe GmbH, Düsseldorf	<a href="http://www.fujifilm.eu">www.fujifilm.eu</a>
Insitumed GmbH, Wentorf	<a href="http://www.insitumed.com">www.insitumed.com</a>
Interlock Medizintechnik GmbH, Lensahn	<a href="http://www.interlockmed.com">www.interlockmed.com</a>
Janssen-Cilag GmbH, Neuss	<a href="http://www.janssen-cilag.de">www.janssen-cilag.de</a>
Karl Storz GmbH & Co. KG, Tuttlingen	<a href="http://www.karlstorz.com">www.karlstorz.com</a>
Laborie MMS Deutschland GmbH, Bottrop	<a href="http://www.mms-deutschland.de">www.mms-deutschland.de</a>
Lehmanns Media GmbH, Düsseldorf	<a href="http://www.lehmanns.de">www.lehmanns.de</a>

## EXHIBITORS

Leufen Medical GmbH, Berlin	<a href="http://www.leufen-medical.eu">www.leufen-medical.eu</a>
mandel + rupp GmbH, Erkrath	<a href="http://www.mandel-rupp.de">www.mandel-rupp.de</a>
Medi-Globe GmbH, Achenmühle	<a href="http://www.medi-globe.de">www.medi-globe.de</a>
Medtronic, Zurich, Switzerland	<a href="http://www.medtronic.com">www.medtronic.com</a>
Medwork GmbH, Höchststadt	<a href="http://www.medwork.com">www.medwork.com</a>
MICRO-TECH Europe GmbH, Düsseldorf	<a href="http://www.micro-tech-europe.com">www.micro-tech-europe.com</a>
MSD Sharp & Dohme GmbH, Haar	<a href="http://www.msd.de">www.msd.de</a>
MTW-Endoskopie W. Haag KG, Wesel	<a href="http://www.mtw-endoskopie.de">www.mtw-endoskopie.de</a>
Norgine GmbH, Marburg	<a href="http://www.norgine.de">www.norgine.de</a>
Olympus Deutschland GmbH, Hamburg	<a href="http://www.olympus.de">www.olympus.de</a>
Ovesco Endoscopy AG, Tübingen	<a href="http://www.ovesco.com">www.ovesco.com</a>
Pajunk Medical Produkte GmbH, Geisingen	<a href="http://www.pajunk.com">www.pajunk.com</a>
Pauldrach medical GmbH, Garbsen	<a href="http://www.pauldrach-medical.de">www.pauldrach-medical.de</a>
PENTAX Europe GmbH, Hamburg	<a href="http://www.pentaxmedical.com">www.pentaxmedical.com</a>
Peter Pflugbeil GmbH, Zorneding	<a href="http://www.pflugbeil.com">www.pflugbeil.com</a>
Promedia Medizintechnik A. Ahnfeldt GmbH, Siegen	<a href="http://www.gastro-funktionsdiagnostik.de">www.gastro-funktionsdiagnostik.de</a>
Shire Deutschland GmbH, Berlin	<a href="http://www.shire.com">www.shire.com</a>
Sintetica GmbH, Aschaffenburg	<a href="http://www.sintetica.com">www.sintetica.com</a>
Standard Instruments GmbH, Karlsruhe	<a href="http://www.std.de">www.std.de</a>
Taewoong Medical, Goyang-si, Korea	<a href="http://www.taewoongmedical.com">www.taewoongmedical.com</a>
Takeda Pharma Vertrieb GmbH & Co. KG, Berlin	<a href="http://www.takeda.de">www.takeda.de</a>
US Endoscopy, Mentor, Ohio, USA	<a href="http://www.usendoscopy.com">www.usendoscopy.com</a>
Chemische Fabrik Dr. Weigert GmbH & Co. KG, Hamburg	<a href="http://www.drweigert.de">www.drweigert.de</a>
Wieser Medizintechnik und Geräte GmbH, Egenhofen	<a href="http://www.wiesermedizintechnik.de">www.wiesermedizintechnik.de</a>

Subject to the regulations of the FSA-code the financial support of the FSA-members is revealed on the website and on-site by request.

*Without engagement – status print date*



# ARRIVAL

## Arrival Maritim Hotel

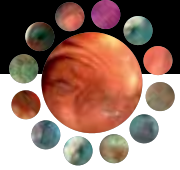


## VRR public transportation





## ARRIVAL



### **Congress Venue**

Maritim Hotel Düsseldorf  
Maritim-Platz 1  
40474 Düsseldorf, Germany

### **Arrival by airplane**

From terminal C you will find a direct terminal connection to the Maritim Hotel.

Discounted travel offers with Lufthansa and detailed information can be found on the the website [www.endo-duesseldorf.com](http://www.endo-duesseldorf.com) at travel information.

### **Arrival by train**

Take the train to Düsseldorf Airport 'Fernbahnhof' and change for the Sky train to Terminal C. A direct terminal connection leads you to the Maritim Hotel.

In cooperation with the Deutsche Bahn an exclusive offer with discounted ticket prices can be found on the website [www.endo-duesseldorf.com](http://www.endo-duesseldorf.com) at travel information.

### **Arrival by car**

Leave the motorway A44 at the exit 'Düsseldorf Flughafen'. Follow the sign 'Airport City'. The Maritim Hotel is located directly in front of you. Maritim Parking garage EUR 16,- per day (regular price EUR 25,-). There are alternative parking facilities at the airport parking garage P8. No discount is possible there.

### **Arrival by metro**

Take the S11 to airport Terminal C. A direct terminal connection leads you to the Maritim Hotel.

Use of public transportation VRR (Verkehrsverbund Rhein-Ruhr) on both days of the core meeting (February 3–4) will be permitted free of charge upon presentation of your name tag. This includes the regional train within the VRR, all buses, trams and metros (U- and S-Bahn).

**20<sup>TH</sup> DÜSSELDORF INTERNATIONAL ENDOSCOPY SYMPOSIUM**

**February 1 – 3, 2018 – Maritim Hotel Düsseldorf, Airport City, Germany**

**Scientific Director**

Horst Neuhaus  
Evangelisches Krankenhaus Düsseldorf  
Kirchfeldstr. 40  
40217 Düsseldorf, Germany  
Phone: +49 (0)211 / 919 16 05, Fax: +49 (0)211 / 919 39 60  
E-mail: sabine.kindler@evk-duesseldorf.de  
www.evk-duesseldorf.de

**Congress Organizer**



COCS GmbH - Congress Organisation C. Schäfer  
Rosenheimer Str. 145c  
81671 Munich, Germany  
Phone: +49 (0)89 / 89 06 77 - 0, Fax: +49 (0)89 / 89 06 77 - 77  
E-mail: sandra.reber@coccs.de  
www.coccs.de

**[www.endo-duesseldorf.com](http://www.endo-duesseldorf.com)**

**IMPRINT**

**Scientific Director**

Horst Neuhaus  
Evangelisches Krankenhaus Düsseldorf  
Kirchfeldstr. 40  
40217 Düsseldorf, Germany  
Phone: +49 (0)211 / 919 16 05, Fax: +49 (0)211 / 919 39 60  
E-mail: sabine.kindler@evk-duesseldorf.de  
www.evk-duesseldorf.de

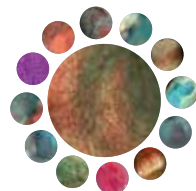
**Publishing House**

Wecom  
Gesellschaft für Kommunikation mbH & Co. KG  
Lerchenkamp 11  
31137 Hildesheim, Germany  
Phone: +49 (0)5121 / 20 66 60, Fax: +49 (0)5121 / 206 66 12  
E-mail: info@we-com.de

**Layout**

Helmut Rottke Werbung/Elsenbach Design

Olympus Deutschland GmbH supports the mailing of the congress program.



**19<sup>TH</sup> DÜSSELDORF INTERNATIONAL  
ENDOSCOPY SYMPOSIUM**

February 2 – 4, 2017 – Maritim Hotel Düsseldorf, Airport City

I will participate at the symposium:

	Registration and payment until Dec 15, 2016	after Dec 16, 2016
<input type="radio"/> Physician	EUR 130,-	EUR 170,-
<input type="radio"/> Member of ESGE	EUR 110,-	EUR 150,-
<input type="radio"/> Member of bng	EUR 110,-	EUR 150,-
<input type="radio"/> Endoscopy assistance	EUR 40,-	EUR 60,-
<input type="radio"/> Student (with certification)	EUR 20,-	EUR 30,-

I take part in the **Satellite symposium** (please see page 5)  
February 2, 2017, 16.00–18.00

I take part in the **Satellite symposium** (please see page 6)  
February 3, 2017, 07.00–08.15

I take part in the **Symposium for nurses** (please see page 8)  
February 3, 2017, 16.15–18.00

I take part in the **Snack with the experts** (please see page 9)  
February 3, 2017, 17.30–18.30

- A) Update on POEM and endoscopic antireflux therapy
- B) Barrett’s esophagus: pitfalls in endoscopic management
- C) Resection of gastroduodenal lesions
- D) Rational treatment of upper GI bleeding
- E) Approach to complex bile duct stones
- F) Management of pancreatic fluid collections
- G) Recurrent colorectal polyps

Please remit the amount until January 16, 2017 to the account of  
COCS GmbH, Munich

HypoVereinsbank Munich  
IBAN: DE69 7002 0270 0039 6176 76  
BIC: HYVEDEMMXXX

Subject: ENDO2017 and name of the participant  
Confirmation **after** payment.

- I hereby agree to receive further information concerning this event via e-mail.
- I do not want to receive further information via e-mail.

.....  
Date, Signature (sender’s address overleaf)

I confirm that I have read and accept the general terms and conditions.



# REGISTRATION FORM



Please separate and return to given address.

Deadline:  
January 16, 2017

Registration also at  
[www.endo-duesseldorf.com](http://www.endo-duesseldorf.com)  
or by fax:  
+49 (0)89 / 89 06 77 - 77

## REGISTRATION

via mail or online at  
[www.endo-duesseldorf.com](http://www.endo-duesseldorf.com)

COCS GmbH  
Congress Organisation C. Schäfer  
Rosenheimer Str. 145c  
81671 Munich  
Germany



Mrs.     Mr.     Prof.     Dr.

First Name

Last Name

Institution

Department

Street

Postal Code

City

Phone

E-mail

specialty:     statistical data     practical     clinical  
 gastroenterology     surgery     internal medicine     others